

OCTOBER 2023

MANAZINE

When buildings can speak

THE RIGHT THING

Read about the next
RIGHT thing coming
up from MANA

Pg 20



From our
MANAGING DIRECTOR

Purchasing properties during the festive season - a strategic move for securing your future.

Investing in real estate during the festive season is a seasoned strategy for securing your future. During these periods, developers and sellers often roll out attractive discounts and incentives, translating into immediate cost savings and advantageous financial gains.

Real estate, recognized for its long-term appreciation, establishes a strong foundation for future financial security. The added auspiciousness of festive seasons can infuse your investment with symbolic significance, representing prosperity and fresh beginnings.

Also, festive season property purchases often coincide with increased market activity and demand. This can lead to quicker property appreciation and rental potential, bolstering the overall return on your investment.

Moreover, property ownership ensures enduring stability, generating rental income and fostering generational wealth, further fortifying your family's financial well-being.

In essence, purchasing properties during festive seasons blends short-term financial benefits, investment potential, and cultural significance, offering a prudent approach to safeguarding your future and also maximizing the potential for long-term financial security and growth.



D KISHORE REDDY
CMD

05

Real Estate Updates

Stay updated on the latest trends in real estate.

06

NEWS Coverage

Catch where MANA made it to the headlines

09

Project Status

MANA Foresta
MANA Capitol

16

DECOR Tip

Tips on how to make your home more lively.

18

BLOGS

Exploring the world of bricks and dreams:
Your gateway to real estate insights.

20

Project Status

MACASA EMERALD
Daintree

Real Estate Updates

2023 HOMEBUYER PREFERENCES: BENGALURU LEADS IN 3BHK DEMAND

In H1 2023, Bengaluru tops the list with 51% of homebuyers preferring 3BHK homes, followed by Chennai at 50% and Delhi at 47%, according to Anarock's study. This surge is fueled by the need for larger spaces to accommodate flexible work setups and improved affordability in these cities.

Modi-Led Reforms Fuel Unprecedented Growth in Indian Real Estate Sector

The Indian real estate sector is witnessing significant growth due to the removal of bottlenecks by the Modi government and improved infrastructure. These reforms have created a favorable environment for private players, resulting in an unprecedented surge in the real estate landscape.

Fueling India's Residential Real Estate with NRI Investments and Government Initiatives

The resurgence of NRI interest is pivotal for India's residential real estate market, as NRIs contribute significantly to the sector through foreign remittances. The Indian government's policies, such as relaxed investment norms and simplified home loans, are strategically designed to attract and facilitate NRI participation in the housing market.

MANA's Green Initiative: Plantation Drive for a Greener Tomorrow at Hegondanahallikere Lake

MANA, a prominent real estate brand, collaborated with Hands-on CSR, a non-profit organization, to host a successful Plantation Drive at Hegondanahallikere Lake in Varthur, Bengaluru. The event aimed to promote green living and environmental care, resulting in the planting of over 1,000 saplings around the lake for a greener future.

Premium Plotted Properties and Villas on the Rise in Bengaluru Real Estate

Bengaluru is witnessing a rising trend in premium plotted property investments as more individuals opt for purchasing plots to build their dream villas. Contrary to the apartment trend in most metros, Bengaluru residents are increasingly inclined towards villas and gated communities for their housing preferences.



MANA ORGANIZES PLANTATION DRIVE, A COLLECTIVE STEP TOWARDS SUSTAINABILITY AND GREEN LIVING

Bengaluru, 13th September 2023: With an objective of taking care of the environment and fostering green living, MANA, a renowned real estate brand conducted a Plantation Drive at Hegondanahallikere Lake in Varthur, Bengaluru. This event aimed to foster a greener tomorrow by encouraging individuals and families to plant trees for a better future. MANA in collaboration with Hands on CSR, a Non-Profit Organization partnered to make this event a huge success with more than 1000 saplings being planted around the lake.

MANA's well-known dedication to green living and crafting luxury homes amidst nature leads them to strongly believe that this event holds a call for everyone. The event symbolized a way to give back to the environment and demonstrate ap-



preciation for nature. With each participant planting a single sapling, the event came together to create a positive impact. The Plantation Drive orchestrated by MANA not only fulfilled its primary objective of tree planting but also served as a unique platform for individuals and families to forge a deep connection with nature. The event symbolized a collective effort towards creating a sustainable and healthier future. This communal effort embodied the spirit of cooperation required to address ecological challenges and create a positive impact.

Speaking on this initiative, Mr. D. Kishore Reddy, Founder, and CMD, MANA Projects Private Ltd says, 'We believe that by sowing the seeds of

change today, we can reap a greener tomorrow. The MANA Plantation Drive is not just about planting trees; it's about cultivating a sense of responsibility towards our environment and inspiring others to join the cause. As we stand amidst the lush greenery that we've collectively planted, we're reminded



of our responsibility to nurture the environment that sustains us. Our actions today, reflect our commitment to a sustainable and greener-living environment for the future. Together, we've not only planted trees but also nurtured the bond between communities and nature, fostering a legacy of green living for generations to come.



The bright future of Indian Real Estate



D. Kishore Reddy, Founder & CMD, MANA Projects Private Limited

With over three decades of experience in the residential, commercial and luxury real estate markets of Bengaluru, India, D Kishore Reddy is the Founder and CMD of Mana Projects Private Limited. The brain behind Mana Foresta, India's first vertical forest tower, Reddy has a penchant for perfection and ensures that his projects blend luxury with innovation and sustainability.

In an interview with REM Times, Reddy speaks about the booming real estate sector of India and the cordial equation the country shares with the Middle East.

Q1. What are the driving factors behind the rapid growth of real estate in India?

Urbanization and population growth have led to an increased demand for housing and commercial spaces. As more people move to cities in search of better opportunities, the need for residential complexes, office spaces, and retail outlets has surged.

Government initiatives such as 'Housing for All' and 'Smart Cities' too have fuelled the construction sector. Subsidies, tax benefits, the rising demand for housing because it is a basic need, steady growth as well as price appreciation, have made property ownership more accessible to a wider segment of the population. Amidst a surge in layoffs across various industries, real estate remains a reliable choice, offering steady price appreciation even in challenging times. Moreover, when it comes to investing one's hard-earned money, real estate continues to stand out as a superior choice.

Additionally, foreign direct investment (FDI) in real estate has increased, bringing in capital for large-scale projects. The rise of information technology and e-commerce sectors has also spurred demand for commercial properties and technology parks. Furthermore, changing lifestyles and preferences have led to a demand for modern amenities and sustainable housing, driving developers to innovate and offer better-quality properties.

Q2. The country has been attracting a lot of foreign investment recently. What is the reason for this?

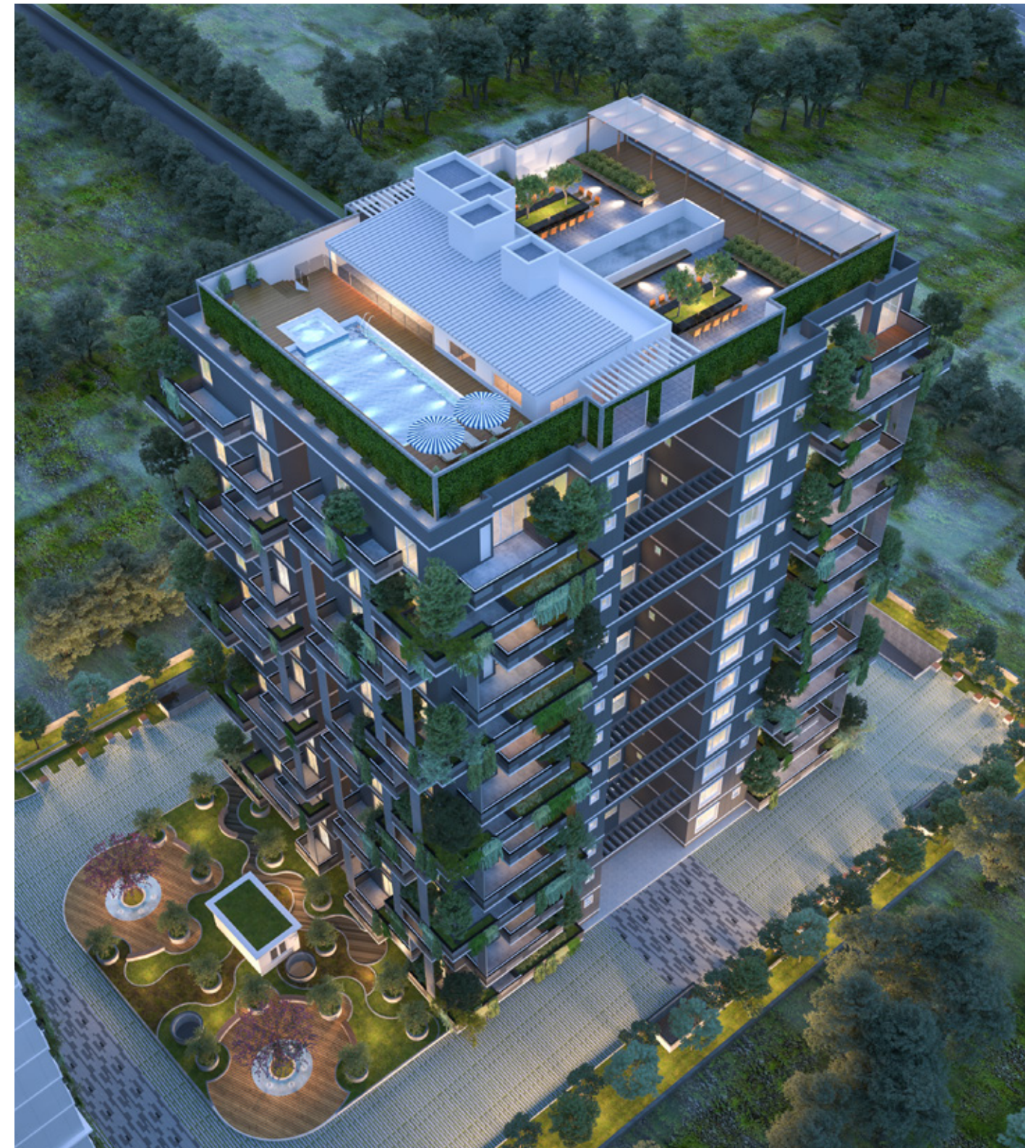
India's robust economic growth and its vast consumer market make it an attractive destination for foreign investors seeking high returns. The country's demographic dividend, with a young and rapidly growing population, further enhances its appeal. Additionally, India has undertaken various economic reforms to improve the ease of doing business, such as the introduction of the Goods and Services Tax (GST) and initiatives to liberalize foreign direct investment (FDI) policies.

Q3. What equation does the country share with the Middle East?

There is a growing synergy. Middle Eastern countries, particularly those in the Gulf region, have significant sovereign wealth funds and are actively looking to diversify their investments internationally. India, with its economic potential and strategic location, has become a preferred destination for Middle Eastern investors seeking to deploy their capital in sectors such as infrastructure, energy, and technology. This mutually beneficial relationship has further facilitated the flow of foreign investment into India.



Scan here to read the full coverage online



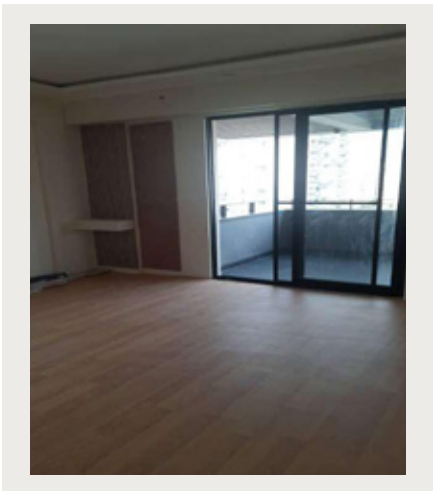
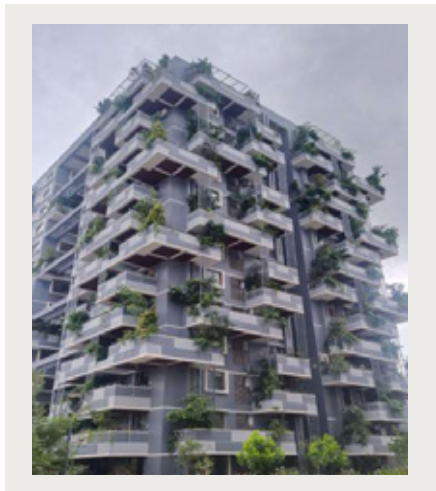
Mana Foresta is an architectural marvel, designed to imbibe a holistic lifestyle where peace, luxury, and opulence converge together. A precisely implemented green landscape dotted with trees and shrubs, featured by classy amenities like a rooftop garden, spa, jacuzzi, infinity pool, and golf course makes it the first preference for nature lovers.



Project Status

STAGES	FORESTA	CLUBHOUSE
Internal Block Work	Completed	Completed
External Plastering Work	Completed	Completed
Plumbing Work (inside Flat Concealed line)	Completed	70% Completed
Electrical Work	Completed	Completed
Flooring Work	Completed	60% Completed
Internal Painting Work	44 Flats compeleted	Painting WIP
External Painting Work	Completed	95% Painting Completed
CP Fittings	75% Completed	Yet to Start
Plantation	Planter box plantation completed, FRP plantation 52 flats Completed	Yet to Start
False Ceiling	Yet to Start	90% Completed
Interior Work	Yet to Start	55% Completed

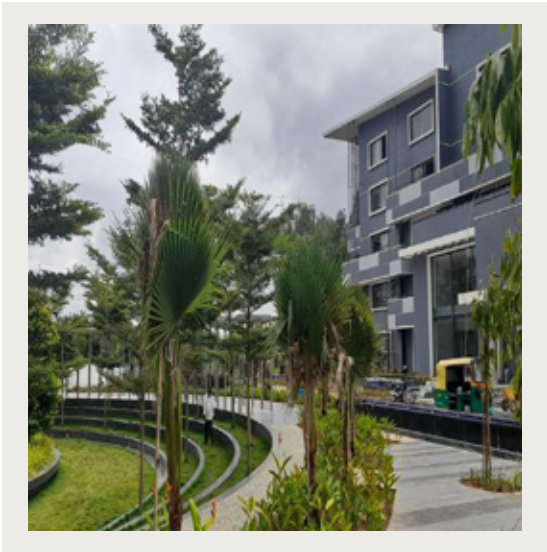
TOWER 1- Progress Report September



- Flats Final finishing WIP,
- CP Sanitary fitting for final finishing WIP
- Final washing for final handover WIP

MANA FORESTA

AMENITIES - Progress Report September



- Clubhouse interior work WIP
- Club house False ceiling work WIP

SCHEDULED WORK

FORESTA

- 5 flats for final handover
- Internal painting work WIP

AMENITIES

- False ceiling work at Club house WIP
- Interiors work at clubhouse WIP



Mana Capitol is new age housing solution for the fast-moving working diaspora, where balancing WORK and LIFE is a seamless process. Thoughtfully placed amenities along with natural greenery all around the premise give a perfect combination of contemporary architecture and features to provide a comfortable living.



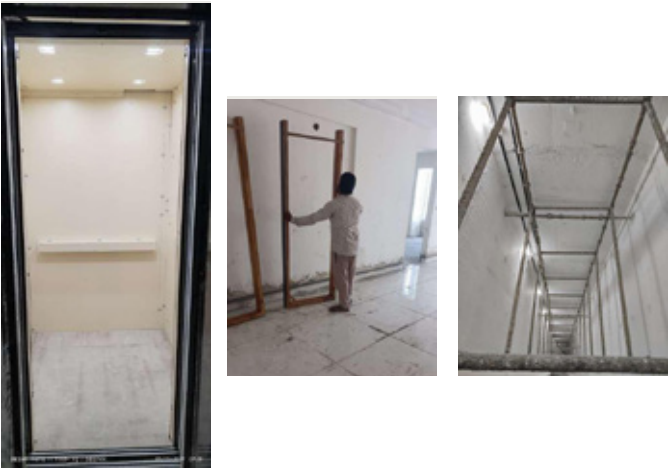
Scan here to watch the construction status video

**MANA
CAPITOL**

MANA CAPITOL

STAGES	TOWER 1	TOWER 2	TOWER 3	TOWER 4	TOWER 5
Foundation	Completed	Completed	Completed	Completed	Completed
1st & 2nd Basement Floor Slab	Completed	Completed	Completed	Completed	Completed
Ground to 18th Floor Slab	Completed	Completed	Completed	Completed	Completed
Internal & External Block Work	Completed	Completed	Completed	Completed	Completed
Internal Electrical	Completed	Completed	Completed	Completed	Completed
Plastering, Flooring & Finishing	18 Floors completed Flooring & Finishing WIP	18 Floors completed Flooring & Finishing WIP	18 Floors completed Flooring & Finishing WIP	18 Floors completed Flooring & Finishing WIP	18 Floors completed Flooring & Finishing WIP
Plumbing Works	Completed	Completed	Completed	Completed	Completed

TOWER 1



PROGRESS REPORT - SEPTEMBER	
Above Terrace	Lighting Arrestor - Completed
Toilet Tile Laying	288 Toilets Completed
Main Flooring Tiles Laying	138 Flats Completed

SCHEDULED WORK - OCTOBER	
Above Terrace	PVC Lattice Fixing
Flat Handover	15 Flats

- Internal wiring & Flat handover(interior) WIP
- Door Frame & shutter Fixing in progress
- Service Lift-Full working Condition
- Passenger & Service lift works in Progress

TOWER 2

PROGRESS REPORT - SEPTEMBER	
Above Terrace	Lighting Arrestor - Completed
Toilet Tile Laying	4 Toilets - WIP
Main Flooring Tiles Laying	1 Flat - WIP

SCHDULEDED WORK - OCTOBER	
Above Terrace	PVC Lattice Fixing
Toilet Tile Laying	4 Toilets
Main Flooring Tiles Laying	1 Flat
Flat Handover	15

- Internal wiring & Flat handover (interior) WIP
- Door Frame & shutter Fixing in progress
- Passenger & Service lift works in Progress



TOWER 3

PROGRESS REPORT - SEPTEMBER	
Above Terrace	Lighting Arrestor - Completed
Toilet Tile Laying	20 Toilets Completed
Main Flooring Tiles Laying	15 Flats Completed

SCHDULEDED WORK - OCTOBER	
Above Terrace	PVC Lattice Fixing
Toilet Tile Laying	20 Toilets planned
Main Flooring Tiles Laying	15 Flats planned

- External painting WIP
- Door Frame & shutter Fixing in progress
- Bathroom & Main Flooring Tiles Completed upto 12th Floor
- Passenger & Service lift works in Progress



TOWER 4

PROGRESS REPORT - SEPTEMBER	
Above Terrace	Lighting Arrestor - Completed
Toilet Tile Laying	20 Toilets Completed
Main Flooring Tiles Laying	15 Flats Completed

SCHDULEDED WORK - OCTOBER	
Above Terrace	PVC Lattice Fixing
Toilet Tile Laying	20 Toilets planned
Main Flooring Tiles Laying	15 Flats planned

- External painting WIP
- Bathroom & Main Flooring Tiles Completed upto 12th Floor
- Passenger & Service lift works in Progress



TOWER 5

PROGRESS REPORT - SEPTEMBER	
Above Terrace	Lighting Arrestor - Completed
Toilet Tile Laying	20 Toilets Completed
Main Flooring Tiles Laying	15 Flats Completed
Corridor Granite laying	2 Floor WIP

SCHDULEDED WORK - OCTOBER	
Above Terrace	PVC Lattice Fixing
Toilet Tile Laying	20 Toilets planned
Main Flooring Tiles Laying	15 Flats planned
Corridor Granite laying	2 Floor WIP

- External Painting in progress
- Bathroom & Main Flooring tiles - WIP
- Door, Shutter fixing, passenger & service lift - WIP



AMENITIES

- External Paver laying works in progress

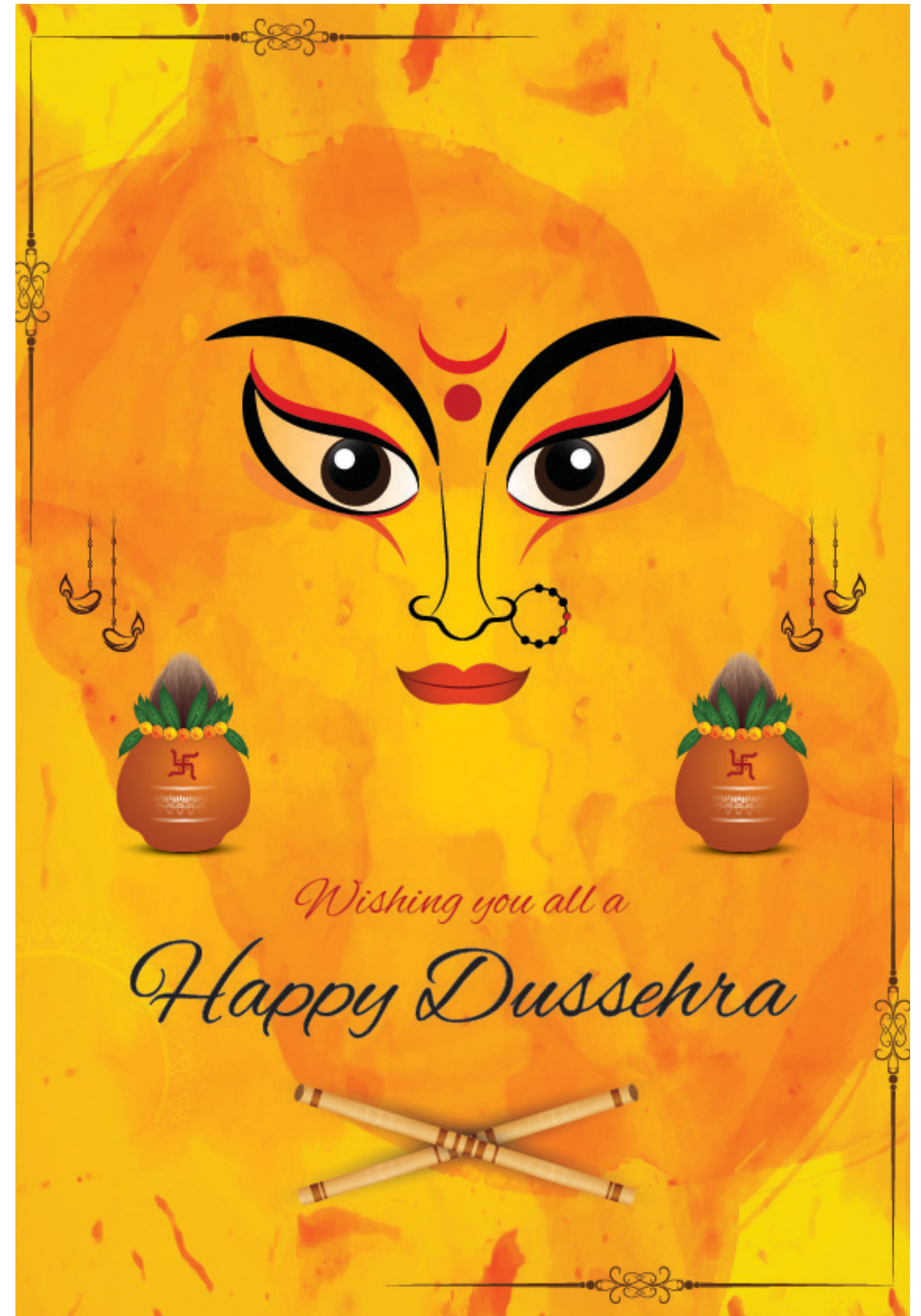


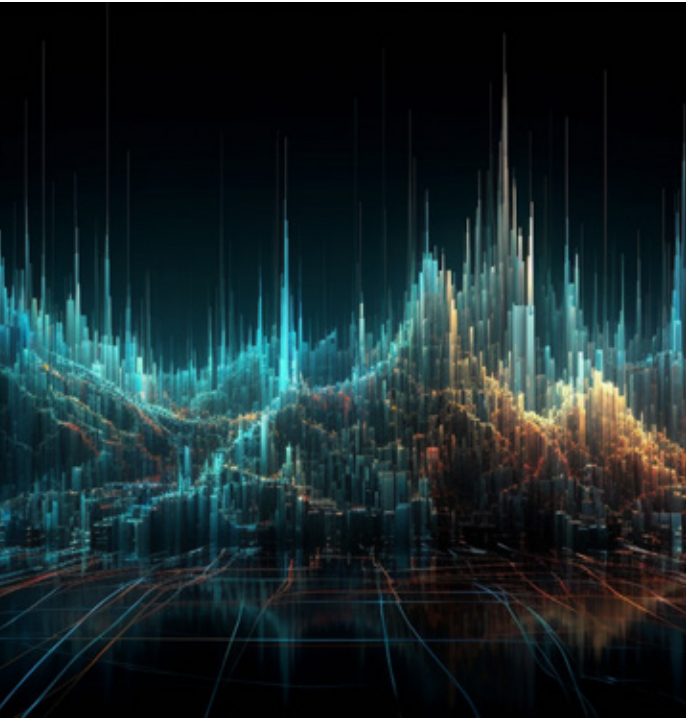
DECOR TIP



The best advice, is to just choose what you love - for everything. "In almost every case, the pieces you are drawn to will all work together beautifully, even if they represent different styles of origin."

"Fill your home with things you truly love, and it will always be beautiful."





A New Trend: Discovering the Charm of Mixed-Use Development Properties in Bengaluru

Bengaluru, the dynamic tech city of India, never ceases to amaze with its spirit of innovation and progress. And now, a fresh trend is redefining its real estate landscape—the rise of mixed-use development properties. These modern wonders blend the essence of living, working, and entertainment within a single complex, reshaping the way we experience urban spaces. For example, the convertible 2 BHK apartments Sarjapur Road are brilliant proof of how mixed-use developments are gaining traction.

Let’s embark on a journey to explore the burgeoning trend of mixed-use developments in Bengaluru, unearthing their unique advantages and the transformative impact they bring to the city’s urban fabric.



Scan here to read the full blog on our website



Why are property Developers turning to Jakkur?

In the heart of the burgeoning real estate landscape, Jakkur emerges as a coveted destination that has captured the attention of property developers. The allure of this locality lies not only in its picturesque surroundings but also in the unique blend of urban convenience and natural serenity it offers.

The allure of apartments in Yelahanka for sale and new apartments near Hebbal adds to the array of opportunities for both developers and potential buyers in the thriving apartments near Jakkur Bangalore market.

From a developer’s point of view, there are several compelling reasons why Jakkur has become a focal point for real estate activity.

Strategic Location:

Jakkur’s strategic positioning in North Bangalore has transformed it into a prime spot for property development.



Scan here to read the full blog on our website



Luxury Living Goes Green: Embracing Eco-Friendly Homes for a Sustainable Future

Amidst the growing concern for climate change and environmental preservation, the real estate industry is witnessing a remarkable shift towards eco-friendly homes that harmonize luxury living with responsible environmental practices. The Luxury homes in Sarjapur Road Bangalore stand as a boastful example of the growing surge of luxury living but with a twist of greenery. Let’s delve into the rising trend of eco-friendly homes, exploring how these sustainable havens offer a perfect blend of opulence and environmental consciousness.

Every element, from the placement of windows to the choice of materials, is meticulously crafted to enhance natural light and promote a harmonious living environment.

Embracing Sustainable Architecture

Eco-friendly homes, also known as green homes, stand as exquisite examples of how architectural brilliance can intertwine with sustainability, Premium apartments in Sarjapur for example.



Scan here to read the full blog on our website



Deciding the Perfect Time to Invest in Real Estate: Apartment, Villa, or Plot

Investing in real estate is a very crucial decision that requires careful consideration of several factors. One very common query that rests in the minds of potential buyers is, “What is the right time to buy a property?” Whether it’s an apartment, villa, 2 BHK flats for sale in Sarjapur Road, or a plot, timing can play a crucial role in maximizing returns and making a wise investment.

Let’s explore the key considerations to help you determine the opportune moment to purchase a property and make an informed decision.

Market Conditions: Monitoring the real estate market is essential when deciding the right time to buy a property. Keep an eye on factors such as property prices, market trends, and supply-demand dynamics



Scan here to read the full blog on our website

THE RIGHT THING

For 23+ years, we've been
doing the right thing when
crafting homes.



The Right Thing to do is to deliver Right.

Right by **Design**

Since 2000, our Human Centric design
has won us **30+ design awards**



Right by **Nature**

Mana is known for creating spaces
where **humans & nature can coexist**



Right by **Appreciation**

40% average appreciation in
Mana projects delivered in 2022



Right by **Quality**

Over **29 quality projects** delivered
with joy to over **7000+ families**



Right by **Time**

99% on-time completion rate over
8 million SFT of homes delivered



Right by **Expertise**

In-house engineering and construction
teams with over **1000+ workforce**



Coming soon...the next lifestyle destination at **Sarjapur-Varthur Road**

7676 555 000

www.manaprojects.com

enquiry@manaprojects.com



Macasa Emerald is a new-age entry level housing brand, primarily for young professionals. Keeping the view of the vibrant lifestyle of the youth, Emerald integrates urbanity, functionality, and a close-knit community. The choice of amenities is a reflection of the dynamic campus lifestyle of the young millennials.



Scan here to watch the
construction status video

MACASA
EMERALD

Project Status

STAGES	TOWER 1	TOWER 2
Third & Fourth Floor Slab	22/9/2023	28/9/2023
Fifth & Sixth Floor Slab	1/11/2023	7/11/2023
Seventh & Eighth Floor Slab	11/12/2023	17/12/2023
Nineth, Tenth & Eleventh Floor Slab	9/2/2024	15/2/2024

TOWER 1- Progress Report September



Sl.no	Description	Planned Quantity	Status
Tower 1 (Third floor Slab)			
1	Reinforcement for Third Floor Slab	100%	100%
2	Third Floor Slab Concreting	100%	100%
3	Columns- Third Floor to Fourth Floor	100%	100%
Tower 1 (Fourth floor Slab)			
1	Shuttering for Fourth Floor Slab	100%	100%
2	Reinforcement for Fourth Floor Slab	100%	100%
3	Fourth Floor Slab Concreting	100%	100%
4	Columns- Fourth Floor to Fifth Floor	100%	90%

TOWER 2- Progress Report September



MACASA EMERALD

Sl.no	Description	Planned Quantity	Status
Tower 2 (Fourth floor Slab)			
1	Shuttering for Fourth Floor Slab	100%	100%
2	Reinforcement for Fourth Floor Slab	100%	100%
3	Fourth Floor Slab Concreting	100%	100%
4	Columns- Fourth Floor to Fifth Floor	100%	100%
Tower 2 (Fifth floor Slab)			
1	Shuttering for Third Floor Slab	100%	100%
2	Reinforcement for Third Floor Slab	100%	90%
3	Third Floor Slab Concreting	100%	Yet to start

TOWER 1- Scheduled Work October

Sl.no	Description	Planned Quantity	Status
Tower 1 (Fourth Floor Slab)			
1	Columns- Fourth Floor to Fifth Floor	100%	WIP
Tower 1 (Fifth Floor Slab)			
1	Shuttering for Fifth Floor Slab	100%	WIP
2	Reinforcement for Fifth Floor Slab	100%	WIP
3	Fifth Floor Slab Concreting	100%	WIP
4	Columns- Fifth Floor to Sixth Floor	100%	WIP
Tower 1 (Sixth Floor Slab)			
1	Shuttering for Sixth Floor Slab	100%	WIP

MACASA EMERALD

2	Sixth Floor Slab Concreting	100%	WIP
3	Reinforcement for Sixth Floor Slab	100%	WIP

TOWER 2- Scheduled Work September

Tower 2 (Fifth floor Slab)			
3	Fifth Floor Slab Concreting	100%	WIP
4	Columns - Fifth Floor	100%	WIP
Tower 2 (Sixth floor Slab)			
1	Shuttering for Third Floor Slab	100%	WIP
2	Reinforcement for Third Floor Slab	100%	WIP
3	Sixth Floor Slab Concreting	100%	WIP
4	Columns- Sixth Floor to Seventh Floor	100%	WIP

Block Work			
1	Tower-01 (Basement Floor) - Including Drain	100%	WIP
2	Tower-02 (Basement Floor) - Including Drain	100%	WIP
3	Tower-1 & 2 (First Floor)	100%	WIP
4	Tower-02 (Second Floor)	50%	WIP
Swimming Pool, Deck Area & Planter Box			
1	Reinforcement Work	70%	WIP
2	Shuttering Work	70%	WIP
3	Concrete Work	70%	WIP
4	Entrance Portal Structure Work	70%	WIP



Daintree is a call to return to nature, along with all the comforts technology provides. A courtyard in a home creates harmony between man and nature; at a physical and symbolic level. Homes that resonate with the wisdom of nature while providing every comfort and convenience you seek that harness nature's power to create a world that is strikingly modern and soulfully natural.



Scan here to watch the construction status video

DAINTREE
BY MANA

STAGES	STATUS
Completion of Foundation - Phase I	55 Villas completed
Completion of Foundation - Phase 2	52 Villas completed
Completion of Ground Floor Slab - Phase I	33 Villas completed
Completion of Ground Floor Slab - Phase 2	9 Villas completed
Completion of First Floor Slab - Phase I	18 Villas completed
Completion of Second Floor Slab - Phase I	15 Villas completed

PHASE 1- Progress Report September

STATUS	
Villa no.1 & 2 Footing & columns pedestal completed	Villa no.13 2nd floor slab RCC completed , 2nd to TF columns RCC completed
Villa no.3 Structural RCC works completed, Ground floor block work in progress	Villa no.29-31 Plinth beam completed, Ground floor columns completed
Villa no.4 Terrace slab completed	Villa no.14,17 & 18 First floor slab RCC completed, 1st to 2nd floor columns RCC completed
Villa no.5 & 7 2nd floor slab shuttering & Reinforcement work in progress	Villa no.33-37 Ground floor columns completed, grade slab completed
Villa no.6 First floor slab RCC completed	Villa no.15 First floor slab RCC completed, 2nd floor slab shuttering & Reinforcement works in progress
Villa no.8 Internal plastering completed, External plastering completed, External painting works in progress	Villa no.16 2nd floor slab completed, Terrace slab shuttering works in progress
Villa no.9 Ground floor columns completed, grade slab RCC completed	Villa no.19 First floor slab shuttering & reinforcement works in progress
Villa no.10 2nd floor columns concrete works completed	Villa no.20 Ground floor columns completed, Grade slab completed
Villa no.11 1st floor to 2nd floor columns completed	Villa no.21 First floor slab RCC completed
Villa no.12 Terrace slab completed	Villa no.22 First floor slab RCC completed, 2nd floor slab shuttering works in progress

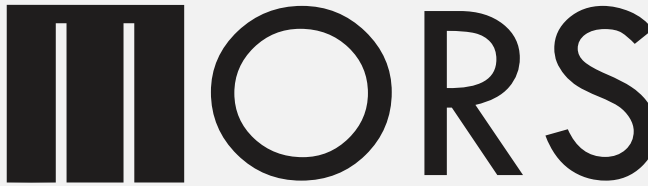
Villa no.23 First floor slab shuttering works in progress	Villa no.47 First floor slab RCC completed, 1st to 2nd floor columns completed
Villa no.24 Ground floor columns completed, Grade slab completed	Villa no.44 First floor slab RCC completed
Villa no.25 & 26 Columns pedestal completed	Villa no.45 First floor slab RCC completed, 1st to 2nd floor columns completed
Villa no.27 Columns pedestal completed, Plinth beam PCC works in progress	Villa no.46 First floor slab RCC completed, 2nd floor slab shuttering & reinforcement works in progress
Villa no.28 Plinth beam reinforcement works in progress	Villa no.47 & 48 Structural RCC works completed
Villa no.29 to 32 Plinth beam completed, Ground floor columns completed	Villa no.54,55 Structural RCC work & Block work completed, Internal plastering works in progress
Villa no.33 to 37 Ground floor columns completed, grade slab completed	Villa no.56,57 Second floor slab RCC completed
Villa no.38 Structural RCC work & Block work completed	Villa no.58,59 Structural RCC work & Block work completed
Villa no.39 Ground floor block work completed, 1st & 2nd floor block works in progress	Villa no.60 Plinth beam, ground floor columns completed, GSB filling works in progress
Villa no.40 Ground floor block works in progress	Villa no.61 Plinth beam completed, Ground floor columns completed, GSB filling works in progress
Villa no.41 & 42 Structural RCC work & Block work completed, Internal plastering works in progress	



PHASE 2- Progress Report September

STATUS	
Villa no. 1 First floor slab RCC completed, 1st to 2nd floor columns completed	Villa no.20 Plinth beam completed, Grade slab completed
Villa no.2 First floor slab RCC completed, 2nd floor slab shuttering & reinforcement works in progress	Villa no.21,22 Footing, columns pedestal, Plinth beam completed, Grade slab completed
Villa no.3 Structural RCC works completed	Villa no.23 Ground floor columns RCC works in progres
Villa no.4 Second floor slab RCC completed, Terrace slab shuttering & reinforcement works in progress	Villa no.24,25,26 Ground floor columns completed
Villa no.4 2nd floor slab RCC completed	Villa no.27 Footing, columns pedestal, Plinth beam completed
Villa no.5 First floor slab RCC completed, 1st to 2nd floor columns completed	Villa no.28 Plinth beam completed, grade slab work in progress
Villa no.6,7 First floor slab completed	Villa no.29 Plinth beam completed, Grade slab completed
Villa no.8 First floor slab shuttering & reinforcement works in progress	Villa no.30,31,32 Plinth beam & Grade slab completed
Villa no.9,10 Ground floor columns completed , Grade slab completed	Villa no.33,34 Plinth beam completed
Villa no.11 Second floor slab RCC completed, Terrace slab shuttering & reinforcement works in progress	Villa no.35 to 45 Plinth beam & Grade slab completed
Villa no.12 First floor slab completed	Villa no.46,47 Footing RCC & columns pedestal completed
Villa no.13,14,15 Ground floor columns completed, Grade slab completed	Villa no.48,49 Plinth beam reinforcement works in progress
Villa no.16,18 Ground floor columns completed	Villa no.50,51,52 Plinth beam RCC completed
Villa no.17 Ground floor columns RCC works in progress	Villa no.53 Plinth beam reinforcement works in progress
Villa no.19 Footing, columns pedestal, Plinth beam completed	Villa no.54,55 Plinth beam RCC completed, Grade slab RCC works in progress

DAINTREE



Mana Owners Referral Scheme

CARING FOR SHARING
SHARING FOR CARING

At MANA Projects, we always look forward to growing our family bigger and stronger & its time to turn your friends & acquaintences into your neighbours.

2%

TOKEN OF APPRECIATION

“ To add more value to your Association, we are now offering 2% Token of appreciation on referrals”



MANA
LIVE BRILLIANTLY

Mana Projects Pvt. Ltd - No. 20/7, 3rd floor, Swamy Legato,
Kadubisanahalli, Outer Ring road, Bengaluru - 560103

www.manaprojects.com